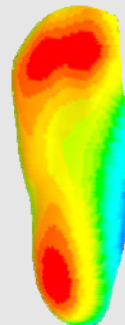




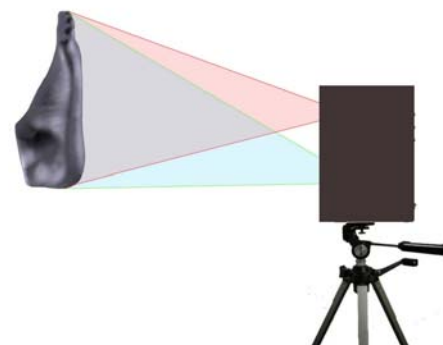
## Vismach 3D Orthotics Digitizer 0306

Software V3.0, Jan 2011



### Standard Features

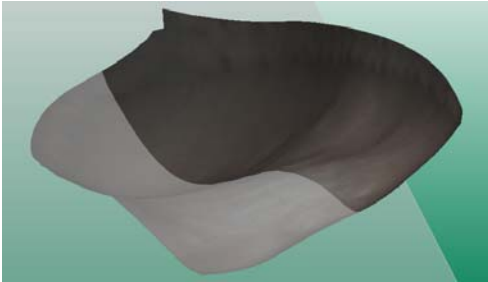
- **3D Mesh (Clean mesh w/o “cleaning up”)**  
Foot plantar, foam impression, physical casts.
- **Instant Capture**  
Foot movement won't be a problem.
- **STJ Neutral**  
Foot to be held with no contact with the digitizer.
- **Semi-Weight**  
Capture with a ScanDock casting cabinet.
- **Accuracy**  
3D mesh. up to 0.5mm linear accuracy.
- **Computer**  
Win XP, Vista, Win7, 32/64 bit. USB 2.0 connection.
- **Proven Product**  
Large active user base world-wide.
- **3D File Formats**  
STL, ASC, OBJ, VRML, PLY, DXF, 3DS, NET, and VGG.
- **Mobility**  
Small and light. Take it anywhere.
- **Safety**  
No laser, only white light. Eye safe and low voltage.
- **Reliability**  
Maintenance free by design, no moving mechanism.
- **Value**  
The best price/performance. No royalty ever.



## Advanced Features

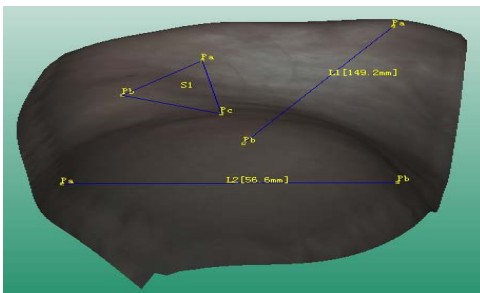
### ■ Heel/Side Expansion

Expand the side and posterior heel to allow frontal plane balancing (forefoot to the rear foot).



### ■ Measurement and Marking

Taking linear measurements and marking landmark points/lines on the 3D files, and save.



### ■ Foot Switch

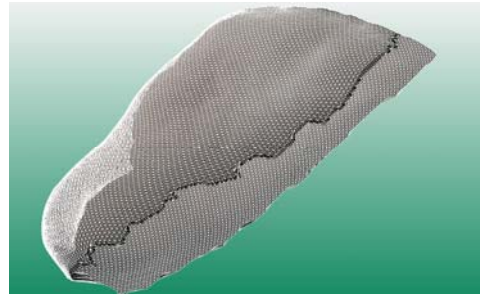
Trigger capture when both hands are holding patient's foot.

### ■ Custom Encryption

Lock up your clinic customers by a custom encrypted file format only you can decrypt.

### ■ Dual-Digitizer Mode

Capture more side and heel of the foot, for AFO and deep cup orthotics. We are the first provide built-in 3D mesh registration and merge function.



### ■ OEM Custom Branding

Promoting your own brand-name 3D system without investing or taking risk in R&D.

### ■ Custom Prescription Form

Integrate your custom HTML prescription file into VGG 3D files.

## Spec Sheet (Vismach 3D Orthotic Digitizer Version 0306):

Application	Foot Plantar and Foam 3D Capture STJ Neutral , Non-Weight or Semi-Weight
Lighting	Normal office lighting conditions. No darkroom.
Standoff	400mm (16 inch) nominal, 350mm (14 inch)~530mm (21 inch) range
Speed	0.1 sec for 3D geometry. 0.5 sec including color texture.
Accuracy	Typical 3D plantar contains around 10,000 vertices. Up to 0.5mm linear accuracy
File Formats	STL, ASC, OBJ, VRML, PLY, DXF, 3DS, NET, and VGG (Vismach format)
Computer	Windows XP; Windows Vista; Windows 7. 32/64 bit. USB connection.
Power supply	100~240V 50/60HZ AC power, worldwide compatibility
Size	280 X180 X 90 mm or 11.0 X 7.0 X 3. 5 inch (excluding top handle)
Weight	3.0 Kg or 6.6 lb